

EXHIBITORS OF THE PERSONAL; MYTH & VOYEURISM

Our mothers tell us not to air our dirty laundry in public. The only people that get to exhibit the paraphernalia of their personal lives are royalty, past Southeast Asian premiers and their first ladies, and very very famous celebrities, often only after death.

We are fascinated somehow by the private lives behind public faces, perhaps by the possibility of either the ordinary or the bizarre behind the mythic persona. As voyeurs we may seek to satisfy our hunger for strangeness, or tear down hierarchical myths, or even some form of complicity.

In the Sultan of Yogyakarta's Palace Museum, we are given a privileged view of the royal quotidian - I remember a pair of kitchen mitts, a hockey stick, reflecting the homely and populist pastimes of a ruler. The people of the Philippines have access to the spectacle of Imelda Marcos' famous shoe collection. Possessions can betray, but also take on the persona, reinstate the myth of their possessors.

Artists, writers, musicians, designers are exhibitionists of a special calibre, their work is to create objects, images, personae, strategies, worlds, to externalise. An artist's or a writer's persona and work inhabit an ambiguous space between the real and the illusory. Here, a brief curtain is drawn open on their everyday, on some of the physical things that mean the most to the creative minds in our midst.

Their exhibits confess, project, deflect, explain, share.

**A CATALOGUE OF
SENTIMENTAL VALUES**

CONVERSATIONS

Liew Kwai Fei

Artist (painter, always breaking down the process of painting), intellectual, technician: a book given by an artist-writer-friend of his critical writings on Malaysian art; a t-shirt given by his girlfriend on 'false dichotomy'



The landscape of the Malaysian art scene is often very hazy: visually polluted by over-sized commercial billboards, road signage built by the government becomes too insignificant to notice, and seemingly points to nowhere.

This little yellow book offers a different entry point to the Malaysian art scene's landscape. In contrast to the highways built by the government, this is a small pathway discovered by Chang Hwang.

The highways were built in a linear design, functioning merely as a means for people to get to their destination faster whereas a pathway forces a traveler to slow down, as they have to read the signs along the way. If not, they might get lost, as Chang Hwang's pathway is not of a linear design and it sometimes offers travelers various junctions to choose from, not necessarily leading them to their destination. It is a real adventure!

In comparison to the ugly, monotonous and stereotypical sort of view along the common highways, a pathway offers more surprise in terms of views and landscapes. This gives inspiration for those who have lived too long in this boring concrete jungle.

'Bon Voyage.'

CONVERSATIONS

Ng Sek San

Landscape architect, art

collector: a chair, designed by a colleague, crafted
by a friend, misappropriated as his own; an ode



Ah Fook's Chair

this object is about my friend ah fook
ah fook is a welder and more than that
i have collaborated with ah fook for more than 10 years
ah fook has help me actualised a lot of the objects and projects which i
became known for
i would not be able to get to where i am without ah fook

ah fook cannot read or speak english
ah fook cannot read chinese either
ah fook is rather illiterate
but ah fook is extremely clever and intelligent
and a great problem solver

ah fook is a fantastic metal worker
and a sculptor at heart
this rabbit chair is made by ah fook
and i got the credit
in fact it was designed and drawn by my colleague lee wern ching
i merely talked about it and pointed at it
when it was still an autoCAD drawing on the computer screen

ah fook is a good friend
and this is his chair

CONVERSATIONS

Wong Hoy Cheong, artist (working across media), educator, sometime activist, curator, writer: his coffee-makers, memorabilia from the last election campaign, to inspire chit-chat, blah-blah

Free Coffee



HABIT

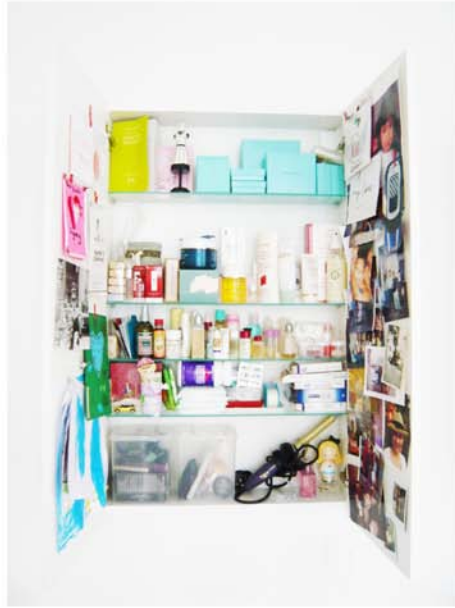
Jaslana Amir

Fashion designer, buyer, wife, mother
&

Jalaini Abu Hassan

Artist (painter), husband, father:

The contents of her bathroom
cabinet, and the contents of his (with some other
prized bric-a-brac)



How to Walk In High Heels Gerobok

SECURITY

Rina Matsui

Designer (accessories): a holster, sleepmate from childhood, and its case, lovingly embroidered by her own hand with pictures of other things she loves



Home is Where the Heart is

My most precious personal belongings are my cultural identity and my memories. One of my favourite things in the world is Sleep. Combine those elements and you have:

an Embroidered Bolster case.

I feel that the bolster is a pillow synonymous with Malaysian culture. Every single Malaysian person whatever their race, has had a bolster at least once in their life, I think!

WORKMATE

Lim Oon Soon

Graphic designer: blue Staedler pencils with black tips - HB to 8B, as a table sculpture of interlocking elements



B-Complex

WORKMATE

Ahmad Zakii Anwar

Artist (painter): his favourite lucky workpants,
laundered, stained with the residues of years of
painting



MUSE

Wong Perng Fey

Artist (painter): inside a plastic biscuit container, a glass jar holding the carcasses of a dragonfly and a cricket, a small jack-in-the-box toy; their painted portraits

Bottom Left : "Dragonfly"
Bottom Right : "Jack-In-The-Box"

Oil on canvas

